



# Fledglings vs Adult Birds

A young bird goes through the following stages before becoming fully independent:

## Leaving the nest:

These birds are starting to leave the nest but can only hop around a little. The parents should be nearby, or off collecting some food for the little one and will be back shortly.

## Fledgling:

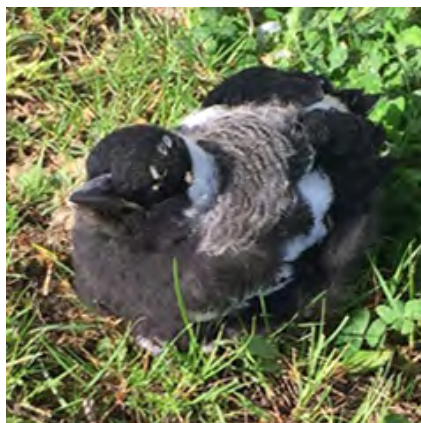
These birds are starting to run around and may even have a go at flying, but they might not have the hang of it just yet. Parents should still be watching out for them. Fledglings may leave the nest for up to 6 hours, so don't be worried if you aren't seeing them regularly!

## Adult:

These birds are old enough to fly confidently and may even be looking after young of their own.

Here's how you can identify nestlings, fledglings and adults in 3 common species:

## Magpie



**Leaving the nest**



**Fledgling**



**Adult**

Look at the beak. Young magpies have dark coloured beaks which gradually become white when they are adults. Adult magpies might swoop you if you get too close to their young.

We hope that by increasing your understanding and awareness of our beautiful wildlife, you feel empowered to deal with wildlife situations confidently in an informed, safe and appropriate manner. For support at any time, please call our emergency response service for advice on **03 8400 7300** or report the details on our website: [www.wildlifelifevictoria.org.au](http://www.wildlifelifevictoria.org.au).



## Fledglings vs Adult Birds

### Raven



**Leaving the nest**



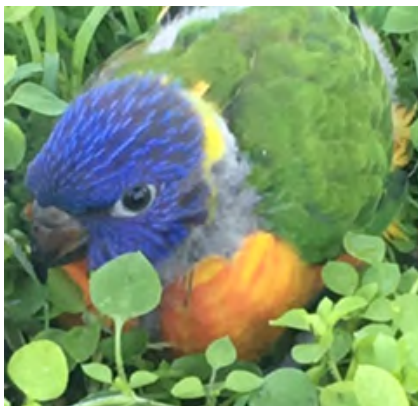
**Fledgling**



**Adult**

Look at the eyes. Young ravens are born with blue eyes, but these will become white in adulthood. In Victoria, ravens like these are commonly mistaken for crows.

### Lorikeet



**Leaving the nest**



**Fledgling**



**Adult**

Look at the beak. Young lorikeets are born with dark grey beaks, but these change to brown, then red in adults. Lorikeets use tree hollows instead of building nests.

We hope that by increasing your understanding and awareness of our beautiful wildlife, you feel empowered to deal with wildlife situations confidently in an informed, safe and appropriate manner. For support at any time, please call our emergency response service for advice on **03 8400 7300** or report the details on our website: [www.wildlifelifevictoria.org.au](http://www.wildlifelifevictoria.org.au).